



EROAD



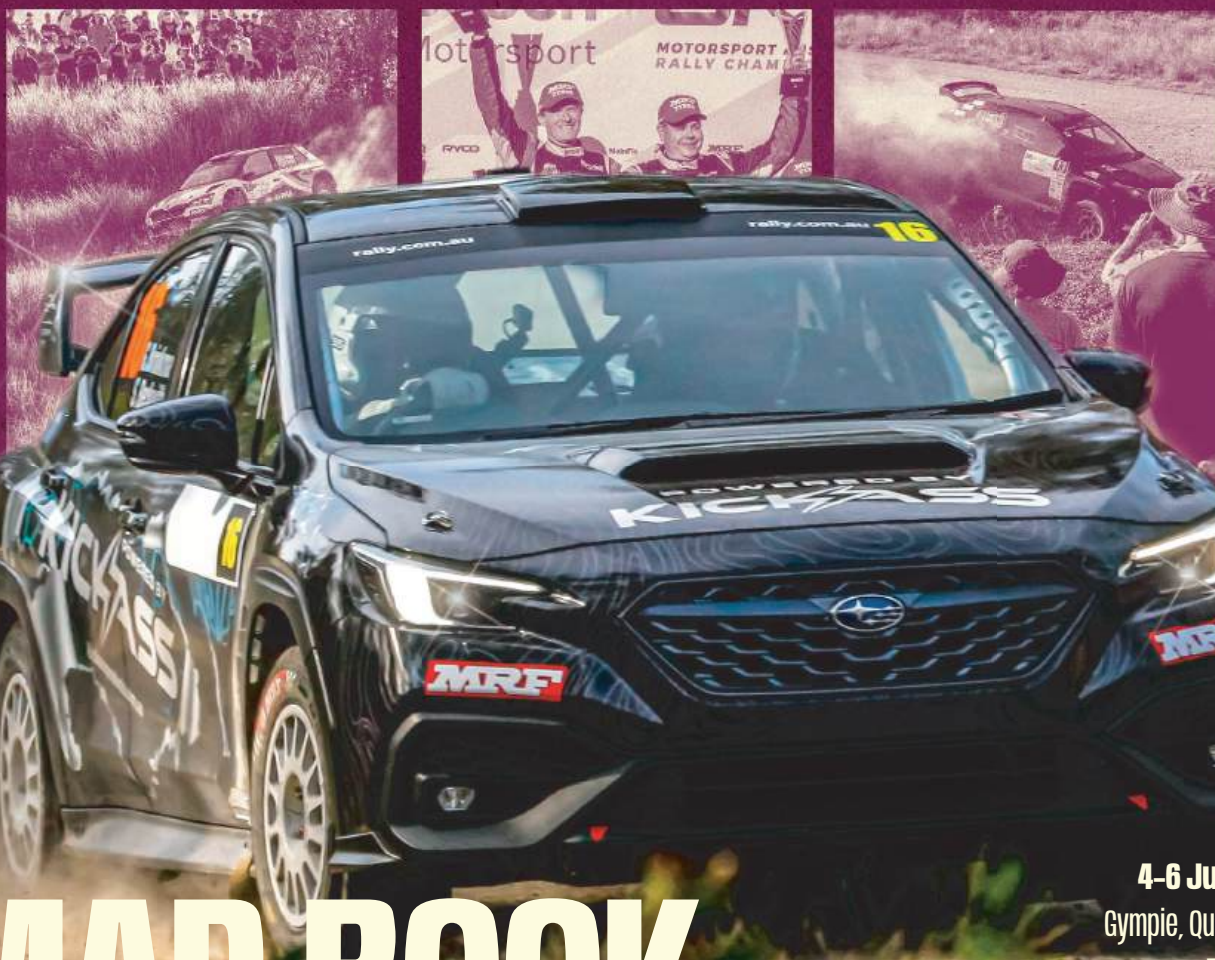
AUSTRALIAN  
RALLY  
CHAMPIONSHIP



Accent  
BENCHTOPS

# RALLY QUEENSLAND

4-6 JULY 2025



# MAP BOOK

4-6 July 2025

Gympie, Queensland

Round 3

EROAD Australian Rally  
Championship

[rally.com.au/queensland](http://rally.com.au/queensland)



BRISBANE SPORTING  
CAR CLUB LTD



CHAMPIONSHIP SPONSORS



EROAD



WOLF



SUPERCHEAP



panta



McQuay's



COLOR



RACER  
INDUSTRIES



netier.



STEDI



BOSCH  
Motorsport



dba  
DUC BRAYERS AUSTRALIA



SafetyCulture



Galvanize



STORTECH



Red Bull



SUBARU  
Foodshare in Motion



motorsport

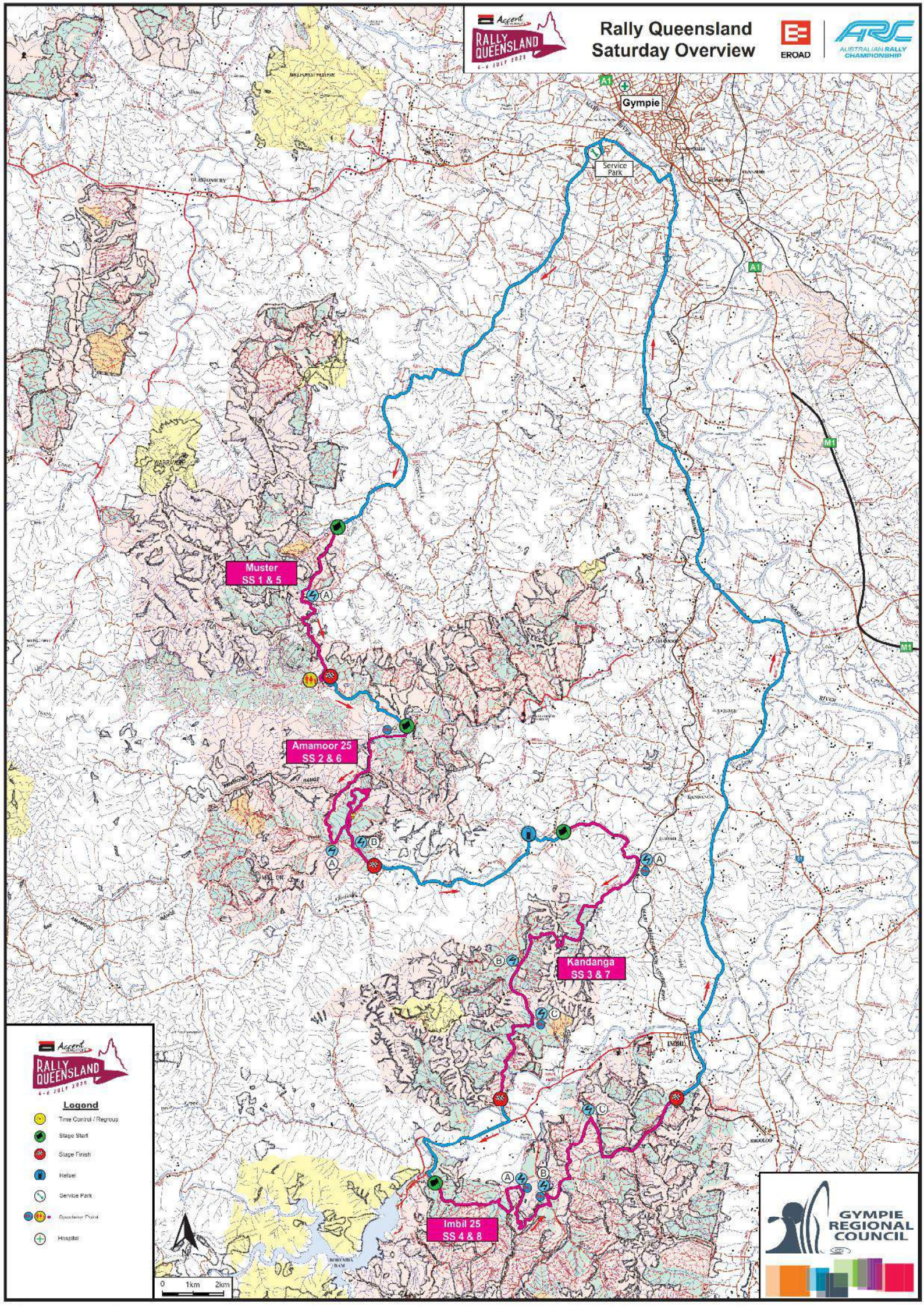


IEG





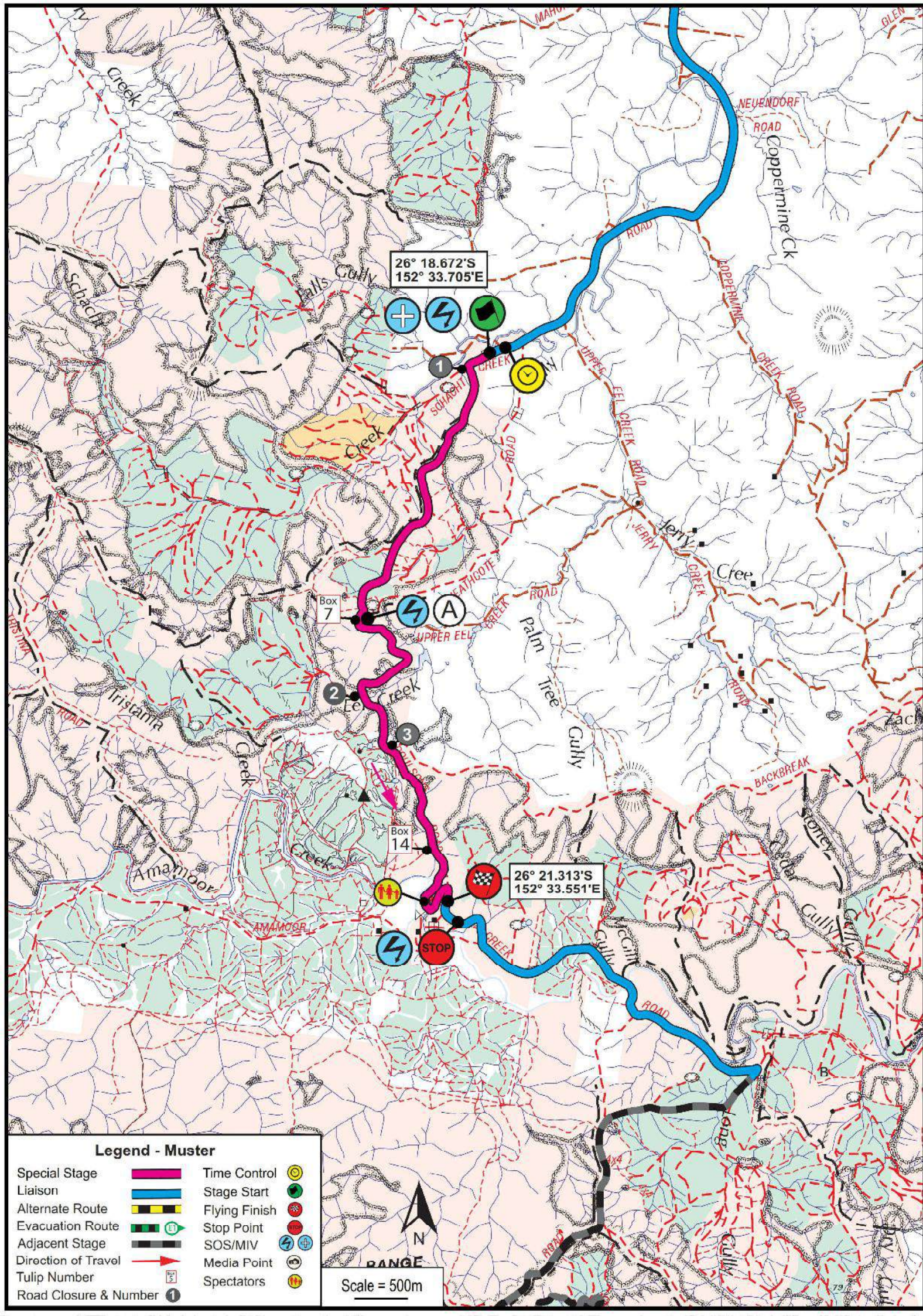




**Legend**

- Time Control / Regroup
- Stage Start
- Stage Finish
- Refuel
- Service Park
- Observer Point
- Hospital



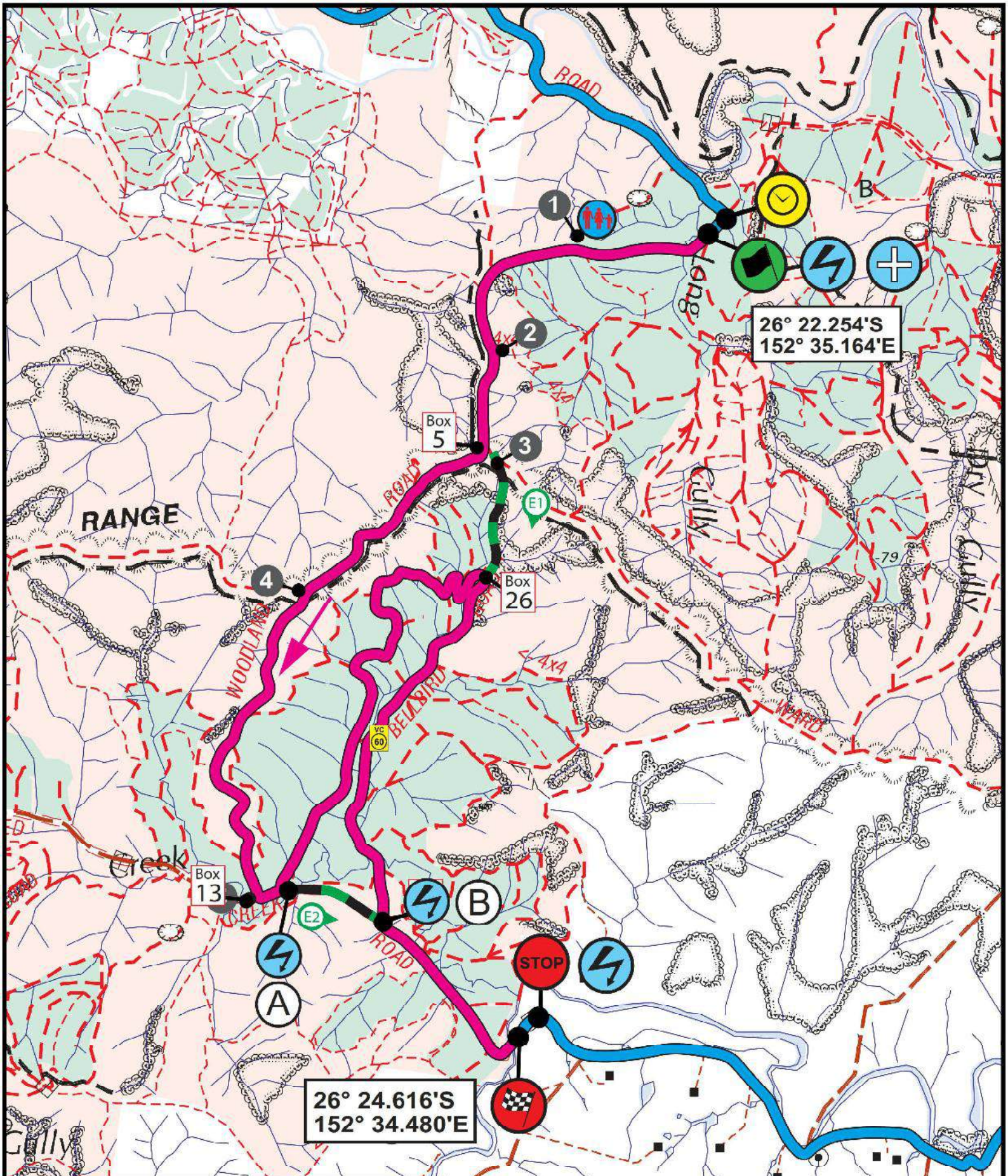


### Legend - Muster

Special Stage		Time Control	
Liaison		Stage Start	
Alternate Route		Flying Finish	
Evacuation Route		Stop Point	
Adjacent Stage		SOS/MIV	
Direction of Travel		Media Point	
Tulip Number		Spectators	
Road Closure & Number			

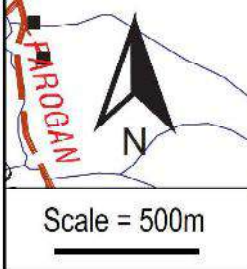
Scale = 500m



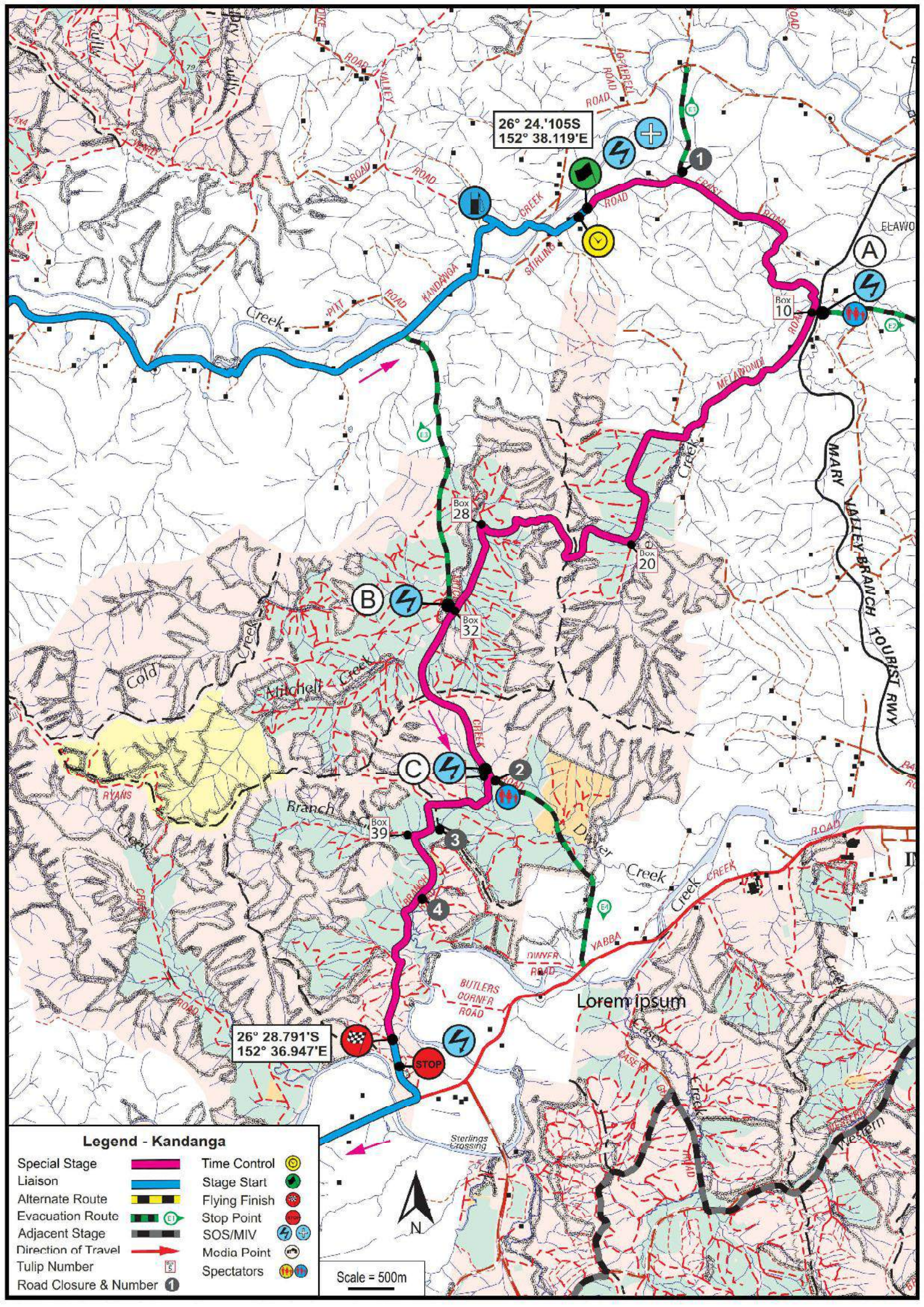


### Legend - Amamoor 25

Special Stage		Time Control	
Liaison		Stage Start	
Alternate Route		Flying Finish	
Evacuation Route		Stop Point	
Adjacent Stage		SOS/MIV	
Direction of Travel		Media Point	
Tulip Number		Spectators	
Road Closure & Number		VC - 60kph	







26° 24.105'S  
152° 38.119'E

26° 28.791'S  
152° 36.947'E

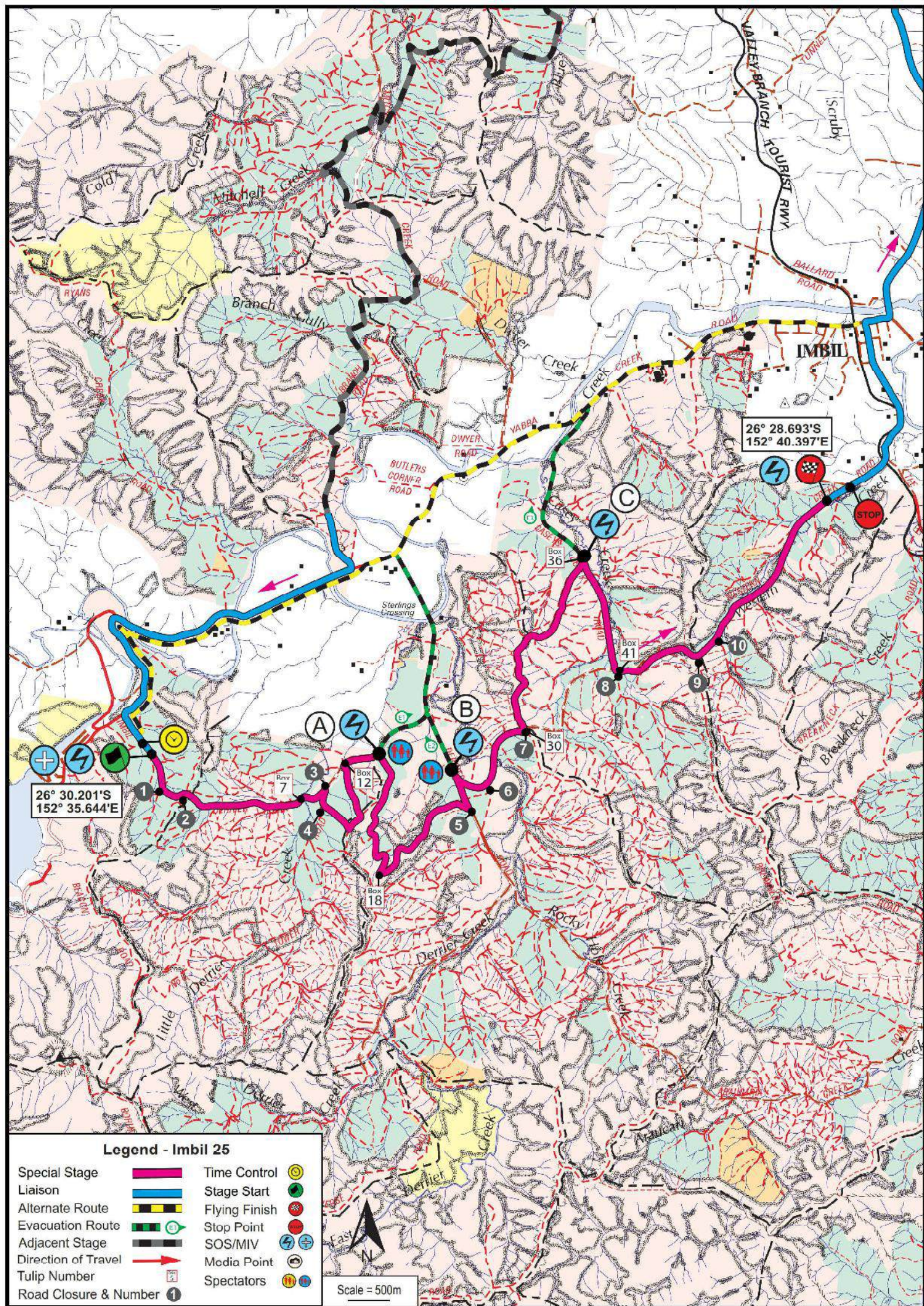
**Legend - Kandangwa**

- |                       |  |               |  |
|-----------------------|--|---------------|--|
| Special Stage         |  | Time Control  |  |
| Liaison               |  | Stage Start   |  |
| Alternate Route       |  | Flying Finish |  |
| Evacuation Route      |  | Stop Point    |  |
| Adjacent Stage        |  | SOS/MIV       |  |
| Direction of Travel   |  | Media Point   |  |
| Tulip Number          |  | Spectators    |  |
| Road Closure & Number |  |               |  |

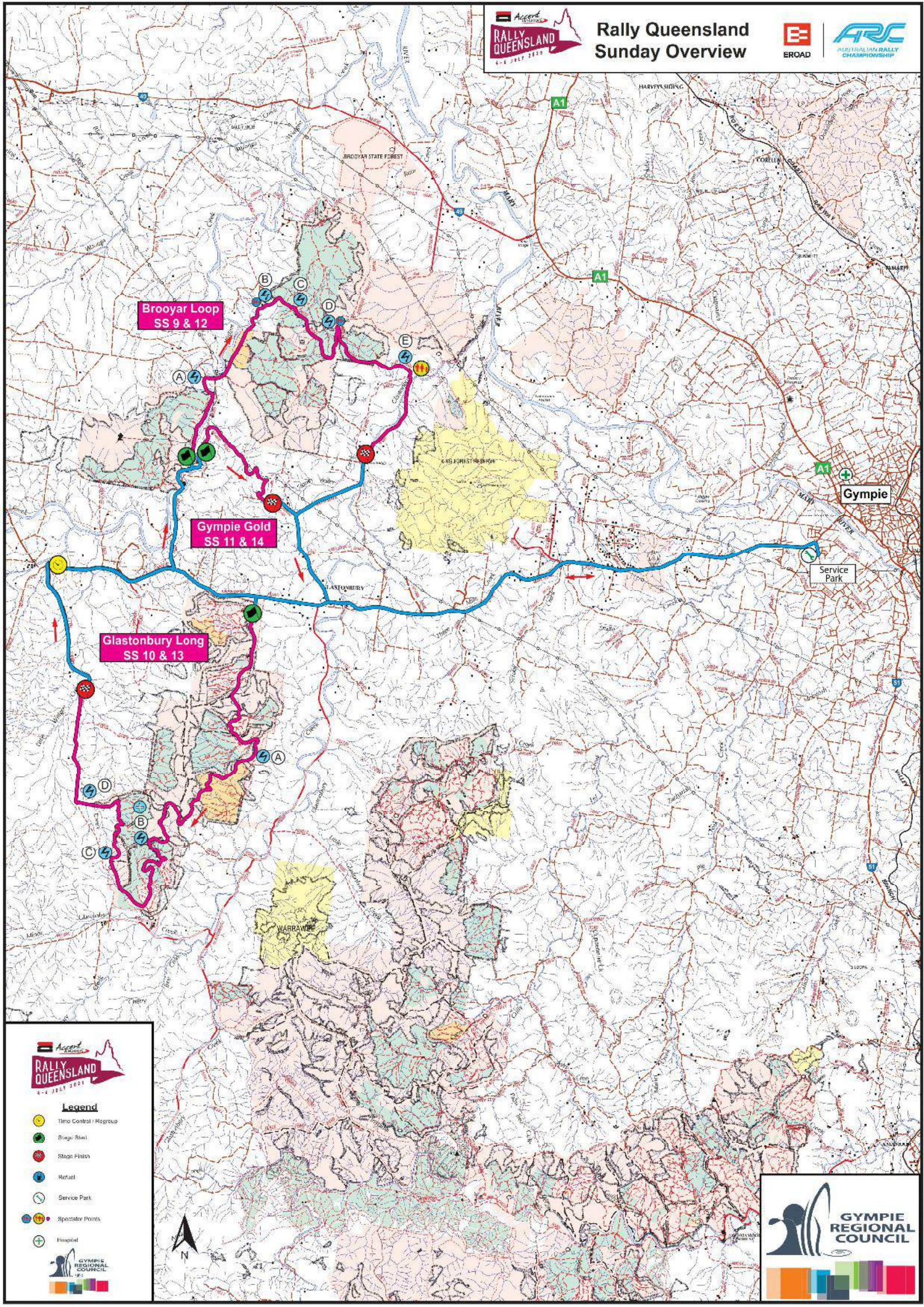


Scale = 500m

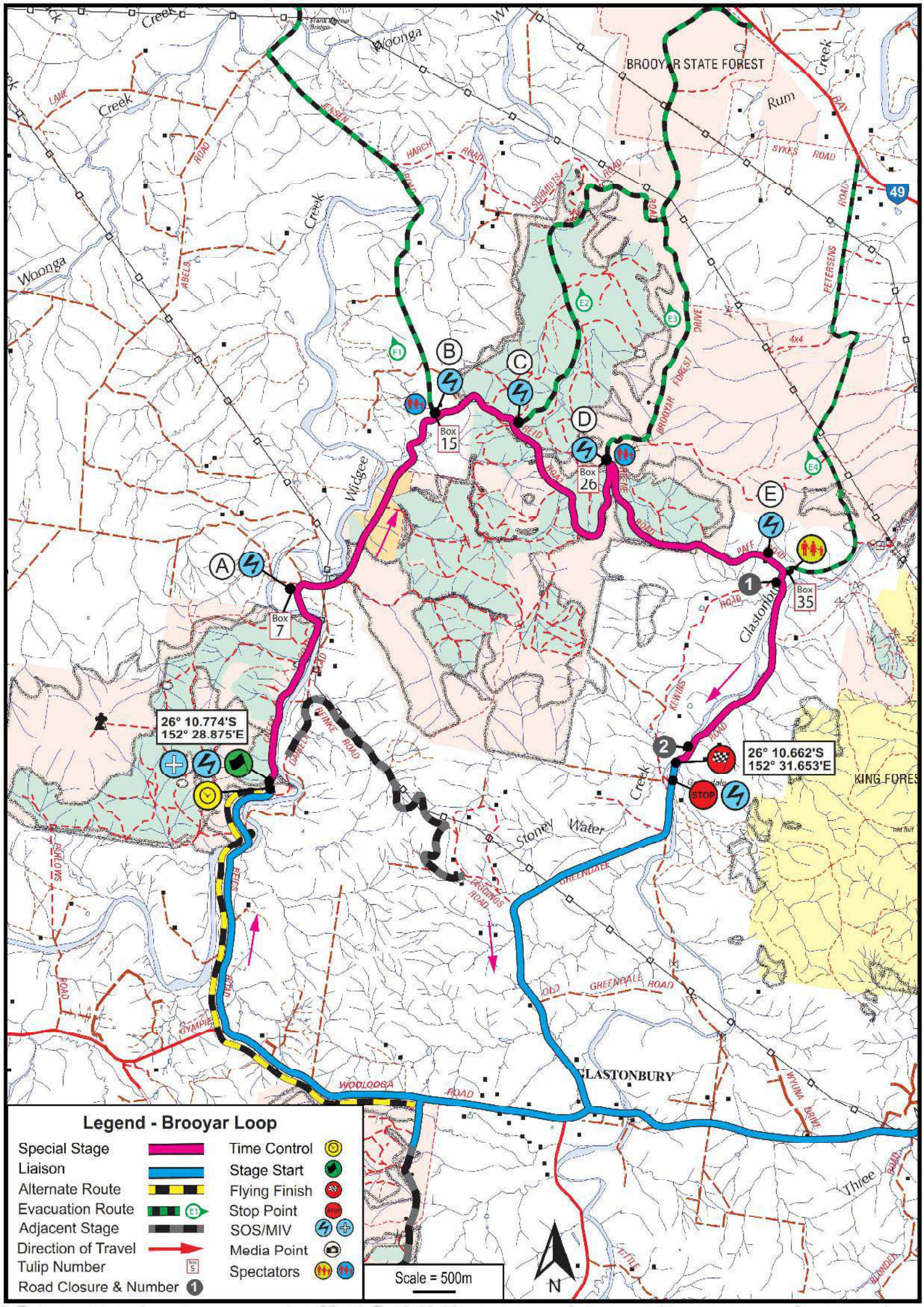












### Legend - Brooyar Loop

- |                       |  |               |  |
|-----------------------|--|---------------|--|
| Special Stage         |  | Time Control  |  |
| Liaison               |  | Stage Start   |  |
| Alternate Route       |  | Flying Finish |  |
| Evacuation Route      |  | Stop Point    |  |
| Adjacent Stage        |  | SOS/MIV       |  |
| Direction of Travel   |  | Media Point   |  |
| Tulip Number          |  | Spectators    |  |
| Road Closure & Number |  |               |  |

Scale = 500m





